

EAVES DETAIL

ED/L LIGHT DUTY

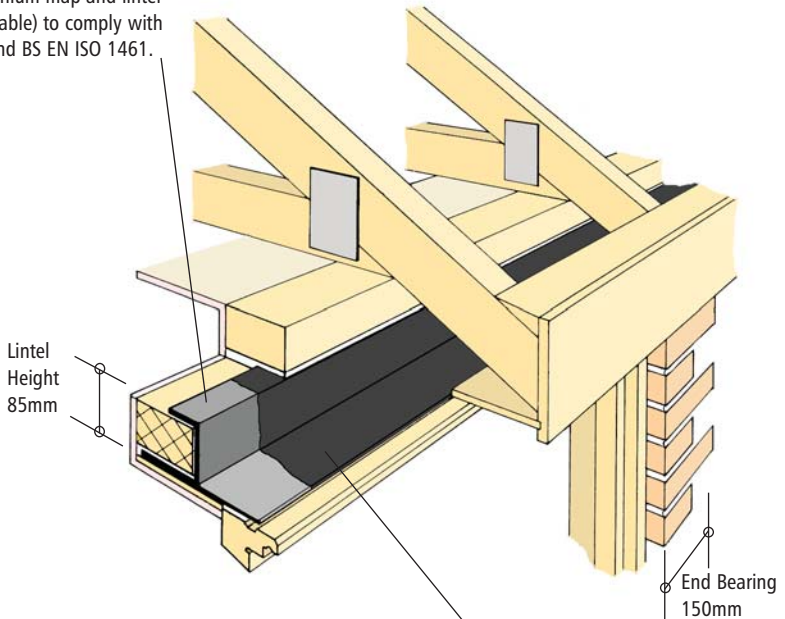
Lintels are manufactured from minimum 4mm thick structural steel plate with a minimum yield strength of 275N/mm².

All lintels are post galvanised to a minimum zinc thickness dictated by building usage and geographical corrosivity ratings (see millennium map and lintel longevity table) to comply with BS 7543 and BS EN ISO 1461.

DURA GALV 70

DURA GALV 100

DURA GALV 140



DUPLEX COATING

Duplex paint system over post galvanised lintel, dictated by building usage and geographical corrosivity ratings (see millennium map and lintel longevity table).

PRODUCTS AND INFORMATION CAN BE AMENDED WITHOUT PRIOR CONSENT TO MAINTAIN THE COMPANY POLICY OF CONTINUED IMPROVEMENT

WHITTINGTON ROAD, OSWESTRY,
SHROPSHIRE, SY11 1HZ
TEL: 01691 653251
FAX: 01691 658222
EMAIL: techadvice@jonesofoswestry.com

JONES
OF OSWESTRY

SECTION **5** PAGE **3**

EAVES DETAIL

ED/L LIGHT DUTY

GENERAL TECHNICAL DETAIL, COMPOSITION AND MANUFACTURE

GENERAL

Introduction. The SUPERLINTEL ED/L range of lintels, for external cavity wall applications, have a number of outstanding features which contribute to performance and durability characteristics which exceed BSEN 845-2:2003 recommendations.

These Features include:-

- 4mm thick structural steel plate used throughout for rigidity, long life durability and dimensional consistency.
- Optimum protection against corrosion; Lintels are hot-dip galvanised after manufacture.
- End bearings of 150mm as standard for high structural stability.
Non-standard end bearings can be supplied to order.

COMPOSITION AND MANUFACTURE

Lintels are manufactured from minimum 4mm thick steel structural plate with a minimum yield strength of 275N/mm².

All lintels are Hot Dip Galvanised after manufacture, tested in compliance with BS EN ISO 1461 for zinc coatings of steel through the controlled inhouse galvanising "DURAGALV" process. Coating thicknesses vary in accordance with the requirements of BS 7543 and local corrosion categories levels.

For "DURAGALV" coatings above 70 microns, I.E: Duragalv 100 and 140, additional controlled processes are employed to ensure the heavier coatings adhere to the "minimum 4mm" specially selected steel plate required to accept these levels of heavy coatings.

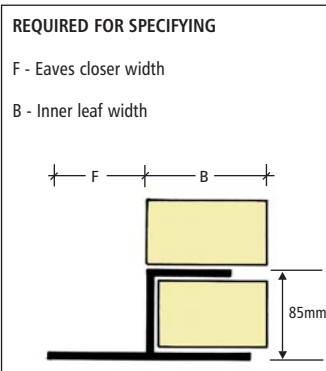
To achieve protection for all five corrosion category areas, a further "DUPLEX COATING" paint system is applied to lintels, after galvanising, in the most severe areas of corrosion levels.

LOADINGS, SECTIONAL DETAIL / PROPERTIES

PERFORMANCE

Mechanics. Safe working loads for the ED/L range of lintels are established by testing based upon the non-destructive test procedures for steel lintels as recommended in BSEN 845-2:2003

Each load is the **total** allowable equivalent uniformly distributed load (UDL) as described in BS 5977 : Pt.1 :



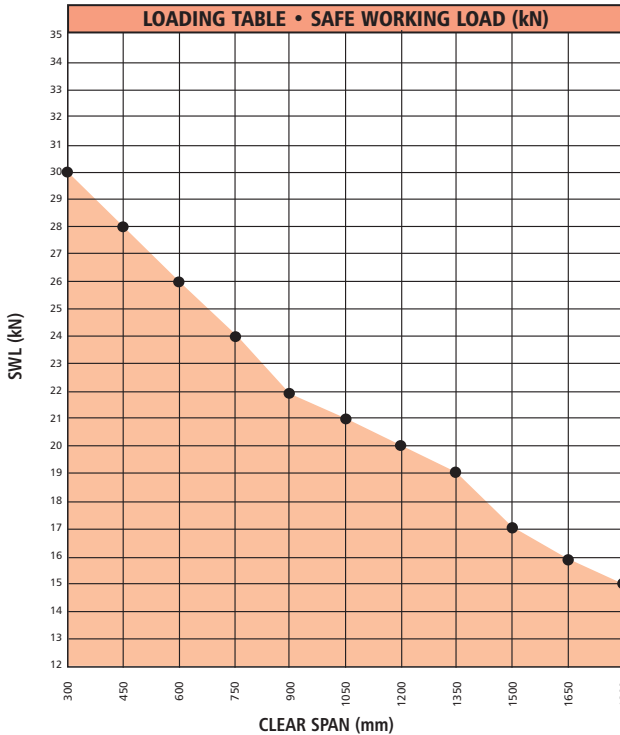
ALL TECHNICAL DETAILS ARE COPYRIGHT, AND MUST NOT BE REPRODUCED WITHOUT PRIOR CONSENT

EAVES DETAIL

ED/L LIGHT DUTY

LOADING TABLES

PRODUCTS AND INFORMATION CAN BE AMENDED WITHOUT PRIOR CONSENT TO MAINTAIN THE COMPANY POLICY OF CONTINUED IMPROVEMENT



| CLEAR SPAN | (min) END BEARING | OVERALL LENGTH | SWL (kN) |
|------------|-------------------|----------------|----------|
| 300 | 150 | 600 | 30 |
| 450 | 150 | 750 | 28 |
| 600 | 150 | 900 | 26 |
| 750 | 150 | 1050 | 24 |
| 900 | 150 | 1200 | 22 |
| 1050 | 150 | 1350 | 21 |
| 1200 | 150 | 1500 | 20 |
| 1350 | 150 | 1650 | 19 |
| 1500 | 150 | 1800 | 17 |
| 1650 | 150 | 1950 | 16 |
| 1800 | 150 | 2100 | 15 |

SECTIONAL PROPERTIES

| SECTION REFERENCE | EAVES CLOSER WIDTH (F) | INNER LEAF WIDTH (B) | LINTEL WEIGHT/M kg | Ixx cm ⁴ | Zxx cm ³ |
|-------------------|------------------------|----------------------|--------------------|---------------------|---------------------|
| ED/L/50/100 | 50 | 100 | 10.68 | 189 | 30.3 |
| ED/L/65/100 | 65 | 100 | 11.19 | 189 | 30.3 |
| ED/L/75/100 | 75 | 100 | 11.53 | 189 | 30.3 |

ACCESSORY SUFFIXES

To specify add the following suffixes to the progressional specification code

- M** Phosphate etch finish to lintel soffit.
- SS** Stainless steel lintel, (Grade 316).

Note: Finish coating suffix code i.e. DG140 (Duragalv 140) is not required

- when specifying stainless steel.
- U** Metal lathing plaster key.

WHITTINGTON ROAD, OSWESTRY,
SHROPSHIRE, SY11 1HZ
TEL: 01691 653251
FAX: 01691 658222
EMAIL: techadvic@jonesofoswestry.com

JONES
OF OSWESTRY

EAVES DETAIL

ED/L LIGHT DUTY

FINISHES

How to use the Lintel Longevity Table

1. Locate your site on the Millennium map (E.g. Leeds - West Yorkshire)
2. Match the corrosion category square colour to the key (Leeds = 3 light blue)
3. From the left hand column clarify required Construction Type / Minimum

- life (High quality Refurbishment = 60 years)
4. Read along from 60 years to category 3 (Minimum coating to be specified to comply with standards = Duragalv 100)
 5. At the end of the specifying code DG100 needs to be added.

Coating suffix specifying codes:

- Duragalv70 = DG70
- Duragalv100 = DG100
- Duragalv140 = DG140
- Duragalv140 + Duplex Coating = DG140DC

| Fabricated mild steel lintel, Hot-Dip Galvanised after manufacture | | = LINTEL LONGEVITY TABLE | | | | |
|---|---------------------|--|---|---|---|---|
| | | Millennium Map corrosion category 1/2/3/4/5, and the minimum coatings to be specified in those areas, to comply with BS 7543 and BS EN 845-2:2003. | | | | |
| See Millennium Map for your site location or visit www.hdg.org.uk/map/index.htm | | 1 | 2 | 3 | 4 | 5 |
| CONSTRUCTION TYPE / MIN LIFE Retail, Industrial and General Refurb. Minimum Life to Comply With BS 7543 = 30 YEARS | DURA GALV 70 | DURA GALV 70 | DURA GALV 70 | DURA GALV 70 | DURA GALV 100 | |
| CONSTRUCTION TYPE / MIN LIFE Health, Education, New Housing High Quality Refurb. Minimum Life to Comply With BS 7543 = 60 YEARS | DURA GALV 70 | DURA GALV 70 | DURA GALV 100 | DURA GALV 140 | DURA GALV 140 DUPLEX COATING | |
| CONSTRUCTION TYPE / MIN LIFE Civic and Other High Quality Buildings. Minimum Life to Comply With BS7543 = 120 YEARS | DURA GALV 70 | DURA GALV 140 | DURA GALV 140 DUPLEX COATING | DURA GALV 140 DUPLEX COATING | DURA GALV 140 DUPLEX COATING | |

Any lintel profile can be created by our in-house design team with spans ranging from 600mm and rises to suit. Contact our advice team on techadvice@jonesofoswestry.com for online support and free design service.

HOW TO SPECIFY

| PROGRESSIONAL EXAMPLE FOR SPECIFYING | | | | | | | | |
|--|-------------------|-----------|---------|------------------------|----------------------|---------------------|---------------------------------|------------------|
| Ref DESCRIPTION | MAIN PRODUCT CODE | WALL TYPE | LOADING | EAVES CLOSER WIDTH (F) | INNER LEAF WIDTH (B) | SPAN | ACCESSORY SUFFIX | FINISHED COATING |
| DETAIL | (EAVES DETAIL) | (LIGHT) | (102mm) | (100mm) | (2100mm) | (METAL LATHING KEY) | (DURAGALV 140 + DUPLEX COATING) | |
| PRODUCT Ref | ED | L | 102 | 100 | 2100 | U | DG140DC | |
| THE ABOVE EQUALS FULL SPECIFYING CODE OF = ED/L/102/100/2100/U/DG140DC | | | | | | | | |

ALL TECHNICAL DETAILS ARE COPYRIGHT, AND MUST NOT BE REPRODUCED WITHOUT PRIOR CONSENT