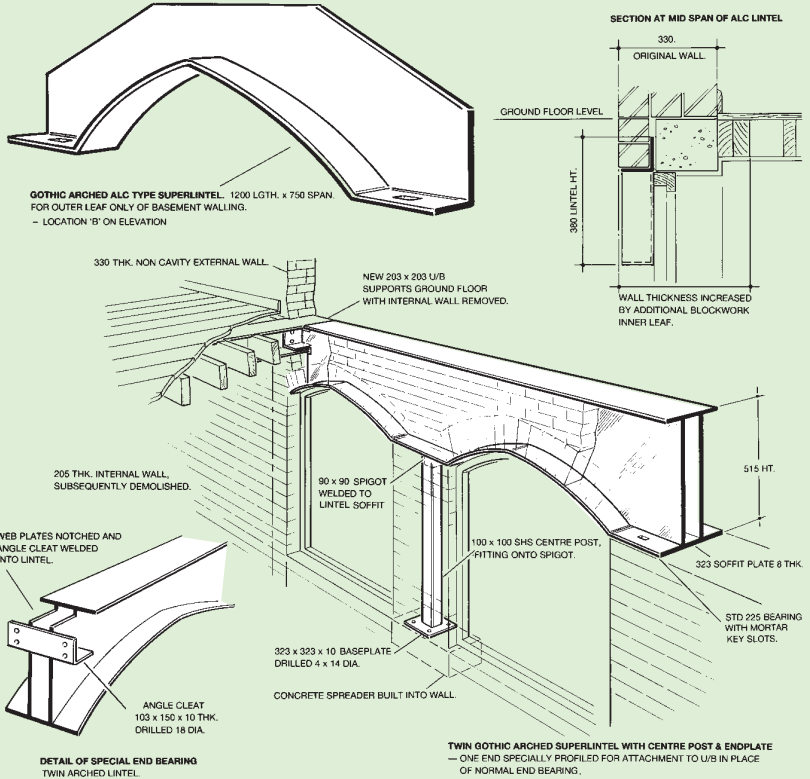


SW PROJECT DETAIL

Specially designed Gothic arched SWFBM type 'Superlintels' for refurbishment of non-cavity basement walls of the original Victorian building.



SOUTH ELEVATION OF ORIGINAL BUILDING, & PART OF 3-WING EXTENSION.

PRODUCTS AND INFORMATION CAN BE AMENDED WITHOUT PRIOR CONSENT TO MAINTAIN THE COMPANY POLICY OF CONTINUED IMPROVEMENT

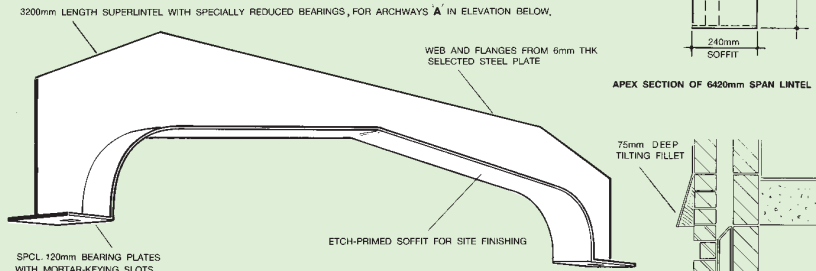
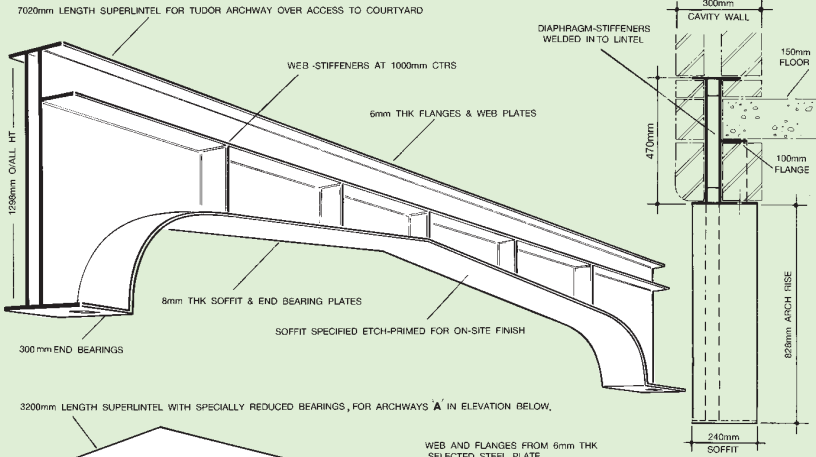
WHITTINGTON ROAD, OSWESTRY,
SHROPSHIRE, SY11 1HZ
TEL: 01691 653251
FAX: 01691 658222
EMAIL: techadvic@jonesofoswestry.com

JONES
OF OSWESTRY

SECTION 2 PAGE 51

SOLID WALL / SW / PROJECT DETAIL

Specially designed Tudor arched 'Superlintels' of 6420mm and 2960mm clear span, with non-standard end bearings.



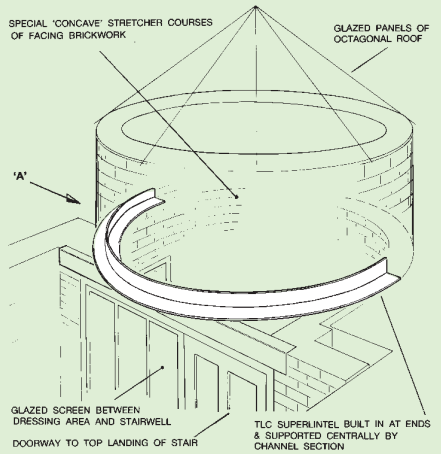
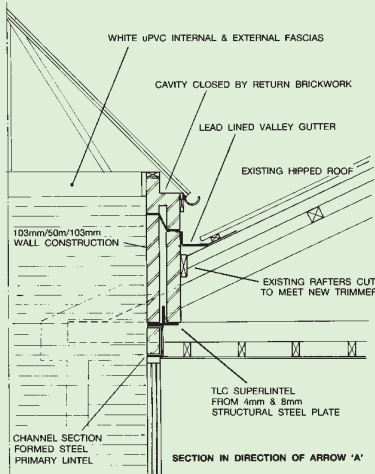
ELEVATION OF DOUBLE-GABLED EXTENSION TO ONE OF LISTED BUILDINGS RENOVATED IN TRADITIONAL STYLE
 --- 4 No. SUPERLINTELS SPECIFIED FOR ARCHES AT A & B OVER WALKWAY.

APEX SECTION OF 2960mm SPAN LINTEL

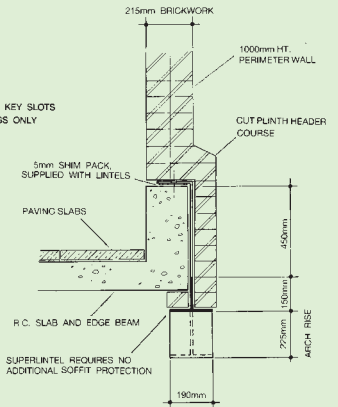
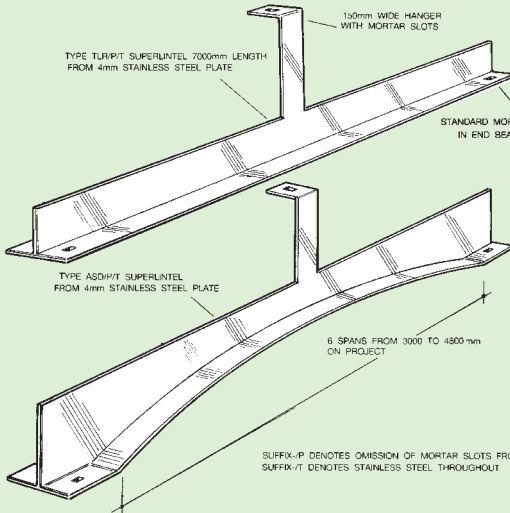
ALL TECHNICAL DETAILS ARE COPYRIGHT, AND MUST NOT BE REPRODUCED WITHOUT PRIOR CONSENT

SOLID WALL / SW / PROJECT DETAIL

Semi-circular SWFB/L section 'Superlintel' spanning 2070mm at 2nd floor access to new circular stairwell.



Stainless steel straight and arched 'Superlintels' with integral centre-span hangers, carrying facing brickwork of vehicle access archways.



SUFFIX -P DENOTES OMISSION OF MORTAR SLOTS FROM FLANGES
 SUFFIX -T DENOTES STAINLESS STEEL THROUGHOUT

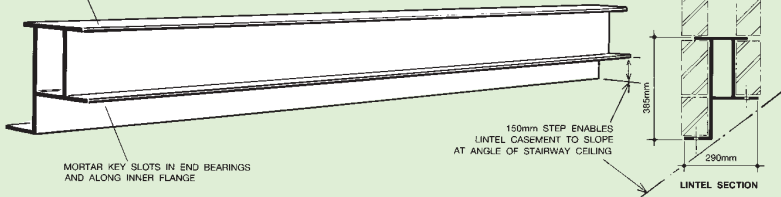
SECTION OF GARDEN DECK PERIMETER WALL

PRODUCTS AND INFORMATION CAN BE AMENDED WITHOUT PRIOR CONSENT TO MAINTAIN THE COMPANY POLICY OF CONTINUED IMPROVEMENT

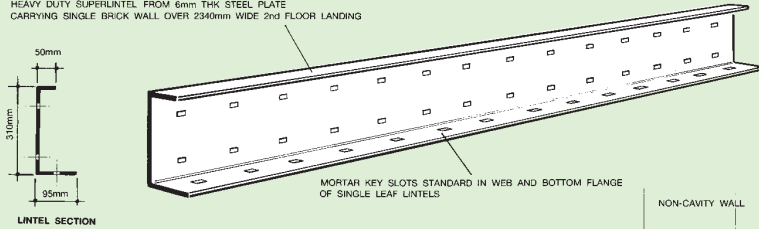
SOLID WALL / SW / PROJECT DETAIL

Standard and specially designed 'Superlintels' meeting various design requirements for apertures in internal and external walls of new accommodation units.

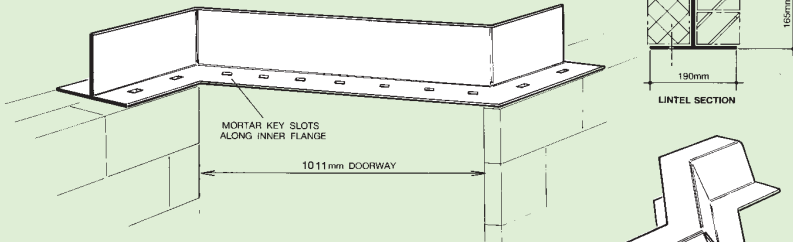
SPECIAL STEPPED-FLANGE SUPERLINTEL FOR 2340mm SPAN ENTRANCE PORCH/HALLWAY CAVITY WALL



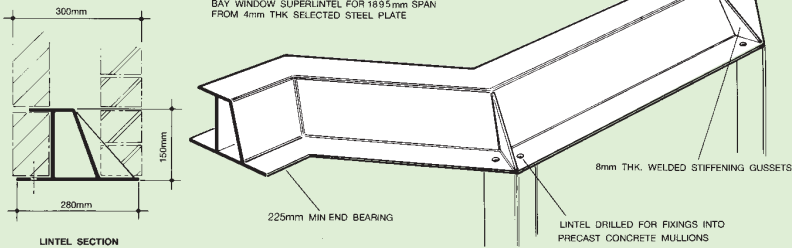
HEAVY DUTY SUPERLINTEL FROM 6mm THK STEEL PLATE CARRYING SINGLE BRICK WALL OVER 2340mm WIDE 2nd FLOOR LANDING



CRANKED TYPE HANDED SUPERLINTEL WITH UNEQUAL END BEARINGS FOR 45° ANGLED FLATS-ENTRANCE DOORS IN SOLID WALLING.



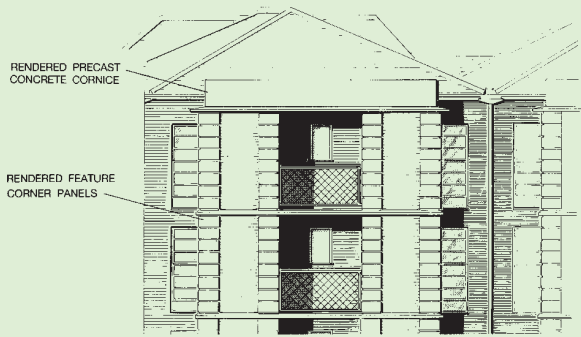
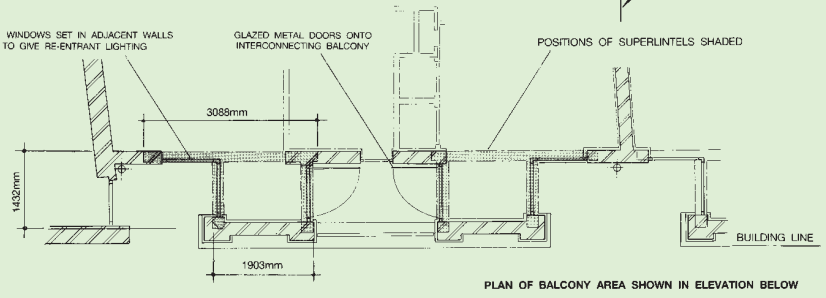
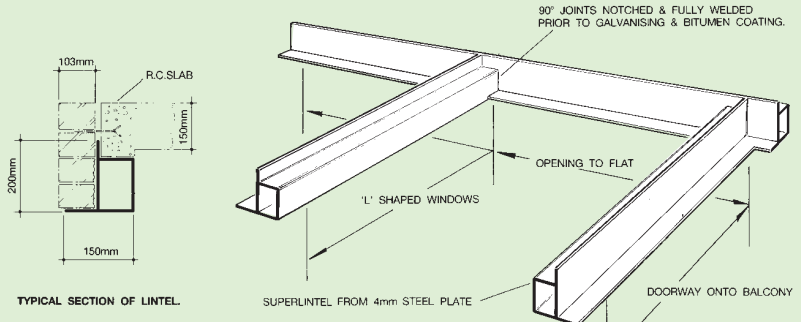
BAY WINDOW SUPERLINTEL FOR 1895mm SPAN FROM 4mm THK SELECTED STEEL PLATE



ALL TECHNICAL DETAILS ARE COPYRIGHT, AND MUST NOT BE REPRODUCED WITHOUT PRIOR CONSENT

SOLID WALL / SW / PROJECT DETAIL

'F' shaped 'Superlintels' over windows and balcony doors where openings are not permitted in walls extending to building line.



A TOTAL OF TWELVE, HANDED VERSIONS OF THE SUPERLINTEL ILLUSTRATED ABOVE WERE SPECIFIED FOR THIS ELEVATION OF THE BUILDING

PART OF NEW ELEVATION LOOKING INTO 2ND AND 3RD FLOOR BALCONIES

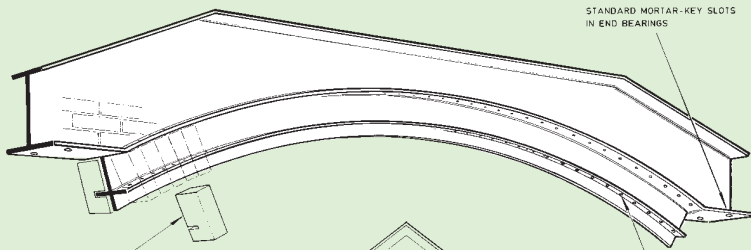
PRODUCTS AND INFORMATION CAN BE AMENDED WITHOUT PRIOR CONSENT TO MAINTAIN THE COMPANY POLICY OF CONTINUED IMPROVEMENT

WHITTINGTON ROAD, OSWESTRY,
SHROPSHIRE, SY11 1HZ
TEL: 01691 653251
FAX: 01691 658222
EMAIL: techadvic@jonesofoswestry.com

JONES
OF OSWESTRY

SOLID WALL / SW / PROJECT DETAIL

SW type segmental arched 'Superlintel' for 5700mm span archways in 'Gatehouse' leading to car-port area.

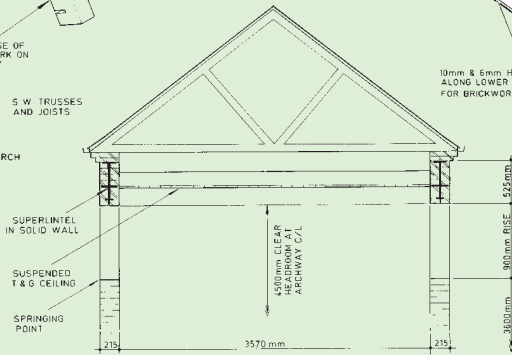


NOTCHED SOLDIER COURSE OF BLUE FEATURE BRICKWORK ON EACH SIDE OF ARCHWAY

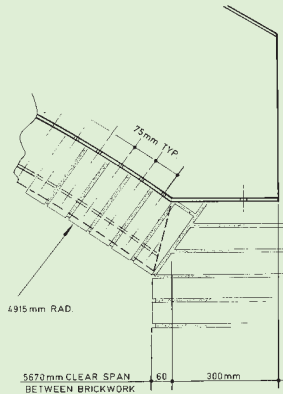
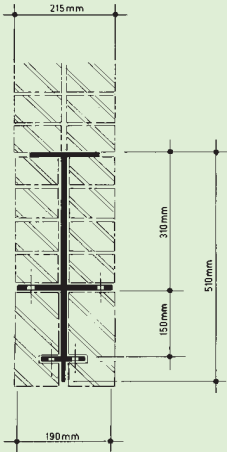
S W TRUSSES AND JOISTS

10mm & 6mm HOLES AT 75mm CTRS ALONG LOWER FLANGES OF LINTEL FOR BRICKWORK FIXING

SECTION AT APEX OF ARCH



SUPERLINTEL FROM STRUCTURAL STEEL PLATE THROUGHOUT



ALL TECHNICAL DETAILS ARE COPYRIGHT, AND MUST NOT BE REPRODUCED WITHOUT PRIOR CONSENT